

ALBANY COUNTY STOCKGROWERS
ASSOCIATION
SUPREME COW PROGRAM

2017 Committee Members

Kelly Lawson 307-760-5957

April Sims 307-339-8338

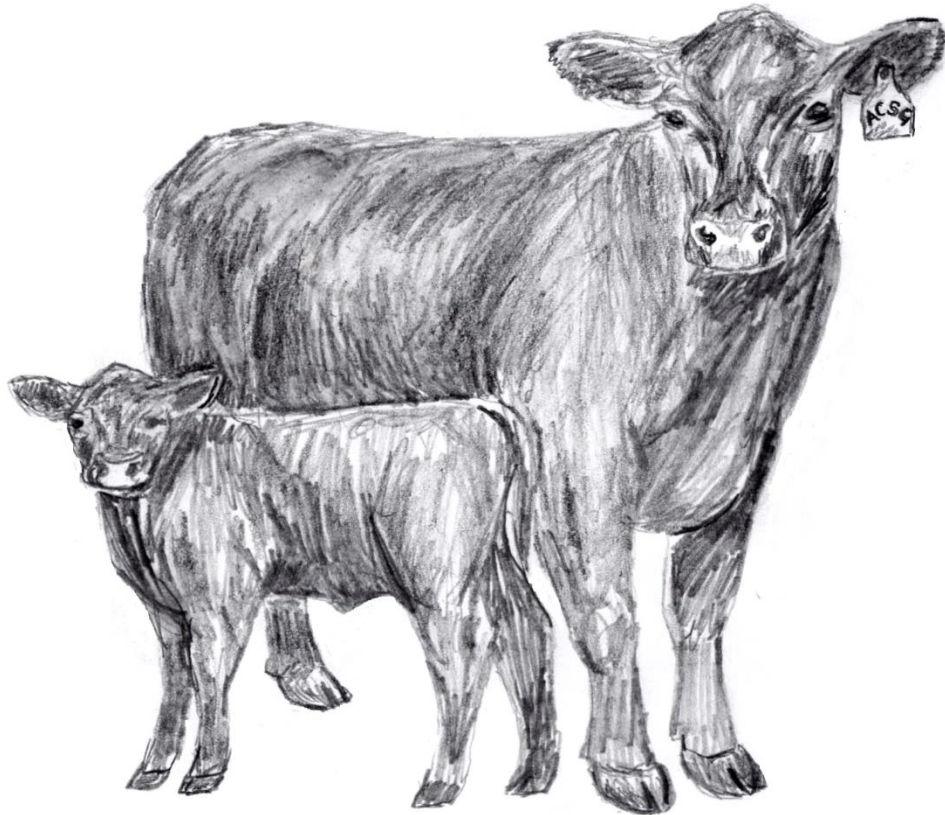
Heather Alexander 307-760-5974

*Please note rule changes for the Supreme Cow Record Book

***Please note CHANGES to Phase I and
Phase II record books**

ALBANY COUNTY STOCKGROWERS ASSOCIATION

SUPREME COW PROGRAM



PHASE II

RECORD BOOK

YEAR _____

NAME _____ PHONE _____

ADDRESS _____

FFA CHAPTER/4-H CLUB _____

AGE _____ YEAR IN 4-H or FFA _____

4-H LEADER /FFA ADVISOR _____

COW NO. _____

CALF NO. _____

Supreme Cow Program Rules

1. The Supreme Cow Program is open to all 4-H and FFA members in Albany County.
2. Members must own their heifer from weigh-in through her second year at the Albany County Fair.
3. Completed record books (obtained at weigh in or at the extension office) will be due on a designated date at the end of July so the judges will have time to judge them prior to county fair. Record books must be **hand written in black ink.**
4. A veterinarian will be available on beef weigh-in day at county fair to pregnancy test the animals. If you prefer to have your own veterinarian do this, you must have a statement signed by the veterinarian, on or after August 1, stating that your heifer is pregnant. This signed statement must be presented to the person in charge at weigh-in. Pregnant or open heifers may be shown in a breeding class if you so choose. If a heifer is called open at fair but was actually pregnant, because of being bred late, she may be shown in phase II, if it is approved by the supreme cow committee. If a cow in Phase II is determined to be open at home, you do not need to bring her to fair, unless you want to show her calf in another class. If your heifer is called open you are still required to complete the record book and go through the interview.
5. The **Phase II** calf must be born after January 1 of the project year. The **Phase I** yearling heifer must be spring born and only one year old by the spring of the year of the project. Phase I heifers and Phase II cow/calf pairs must have the Albany County Stockgrowers ear tag and button.
 - a. Immediately following the birth of your heifer's calf (Phase II), a Supreme Cow Committee member must be contacted to document and tag the calf.
 - i. If your calf dies, a committee member must be contacted immediately to determine the best course of action such as grafting a calf and continuing with the program. Failure to inform a committee member of death loss may result in disqualification.
6. Cow/calf pairs will be shown in pens, so you will not need to trim them. The cow/calf pairs and pens will be kept clean during fair week. This will be reflected in the herdsmanship score. Calves in any of the feeder classes will need to be trimmed. The 4-H or FFA participant will be responsible for making and displaying their information stall posters.
7. Personal interviews and visual appraisals will be held during fair. Three judges (made up of Albany County Ranchers) will be selected by the Albany County Stockgrowers Supreme Cow Committee. Members will be advised of time and place of the interviews before the fair. Interview questions may be asked about feed costs and types, cost of gain, management techniques, goals, and any other areas of interest that the judges may wish to pursue.

8. Phase I, or heifer phase, scoring:

A. Record Book	25%
B. Interview	20%
C. Visual Appraisal	50%
D. Showmanship	5%

Phase II, or cow/calf phase, scoring:

A. Record Book	25%
B. Interview	20%
C. Visual Appraisal	50%
D. Herdsmanship	5%

9. Awards sponsored by the Albany County Stockgrowers and area breeders, are given as follows:

- A. Phase I: 1st— \$200 & Belt Buckle; 2nd— \$100; 3rd— \$50
- B. Phase II: 1st— \$200 & Belt Buckle; 2nd— \$100; 3rd— \$50
- C. Overall (combined scores from Phase I & II) — a heifer donated by an Albany County Rancher.
 - **A list of heifer donors will be provided to the overall winner. It is the sole responsibility of the winner to contact the donor of his/her choosing and to arrange for selection and or pick up of the donated heifer.**
 - **Please notify a committee member once a donor heifer has been selected and is in your possession.**